

June 2022

Data Use Acceleration and Learning (DUAL)

Accelerating country-led digital health transformation for data use to improve health outcomes

Laurie Werner, Co-Lead Center of Digital & Data Excellence, PATH

Dr. Chilunga Puta, Senior Immunization Advisor, PATH

Dr. Seif Rashid, Data Use Partnership Director, PATH, former Tanzanian Minister of Health

Maganizo Monawe, Senior Technical Advisor, Malawi Ministry of Health





Advancing digital transformation for data use

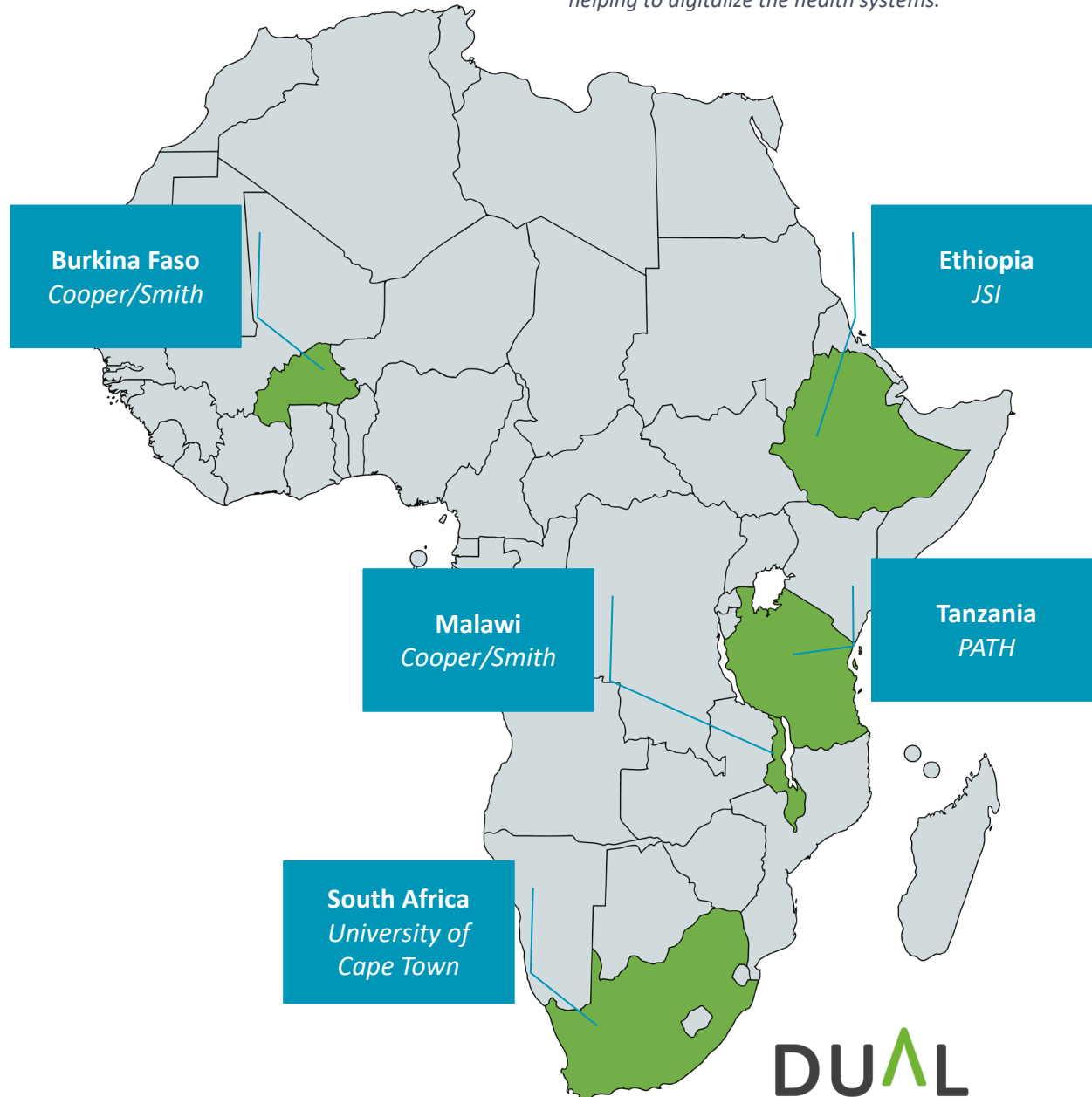
Under DUAL, PATH and Cooper/Smith are working to sustain gains in digital transformation and data use.

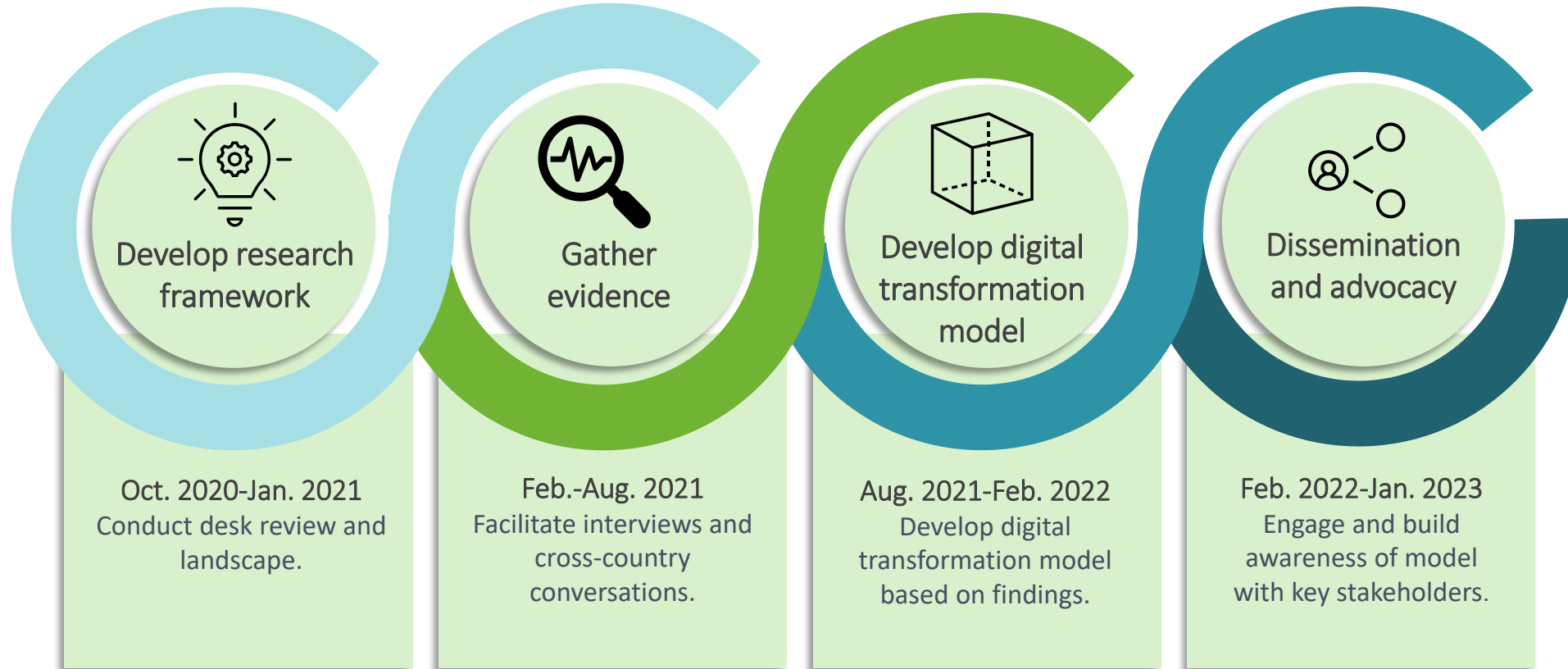
DUAL is advocating for the inclusion of country learnings on digital tools and approaches within global policies, future interventions, and funding mechanisms.

Map depicts 5 focal countries and the partners helping to digitalize the health systems.

Catalyzing digital transformation

DUAL collected learnings from five focal countries and packaged them into a model for digital transformation.





Change objectives



Uptake of digital transformation model.



Greater coordination between governments, investors, and implementers.



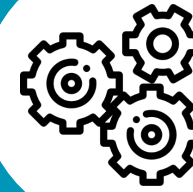
Increased supportive normative guidance for digital transformation for data use.

Catalyzing digital transformation

DUAL will translate country learnings into a toolkit for digital transformation for data use and a package of actionable advocacy materials to inspire change among key audiences.

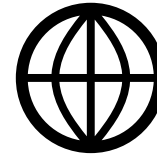
Implementers

Uptake of the digital transformation model in other countries.



Countries

Greater alignment between digital initiatives and integration of learnings within national strategies.



Funders

Greater coordination between investments and with countries' national strategies.



Policymakers

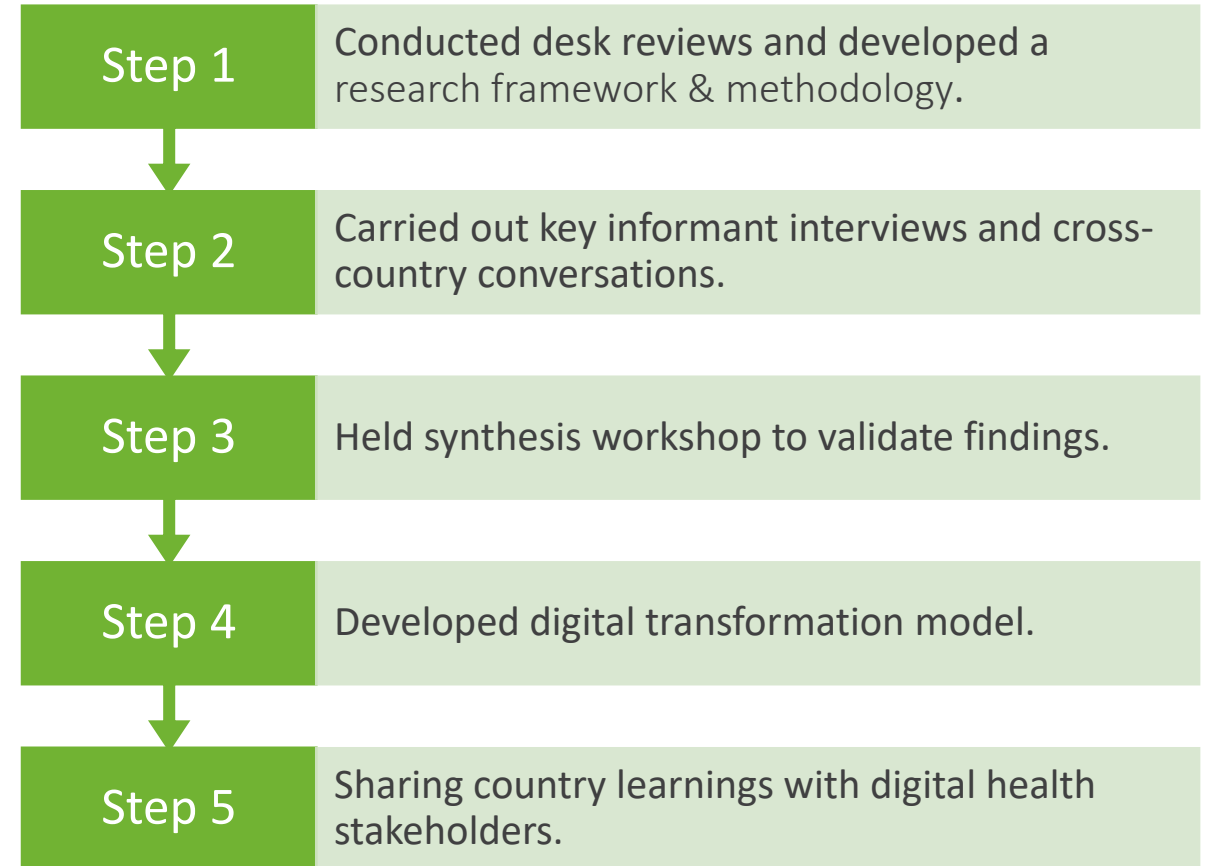
Increased normative guidance around best practices in digital transformation and data use.



DUAL



A collaborative research approach



A deeper dive

72 documents reviewed.

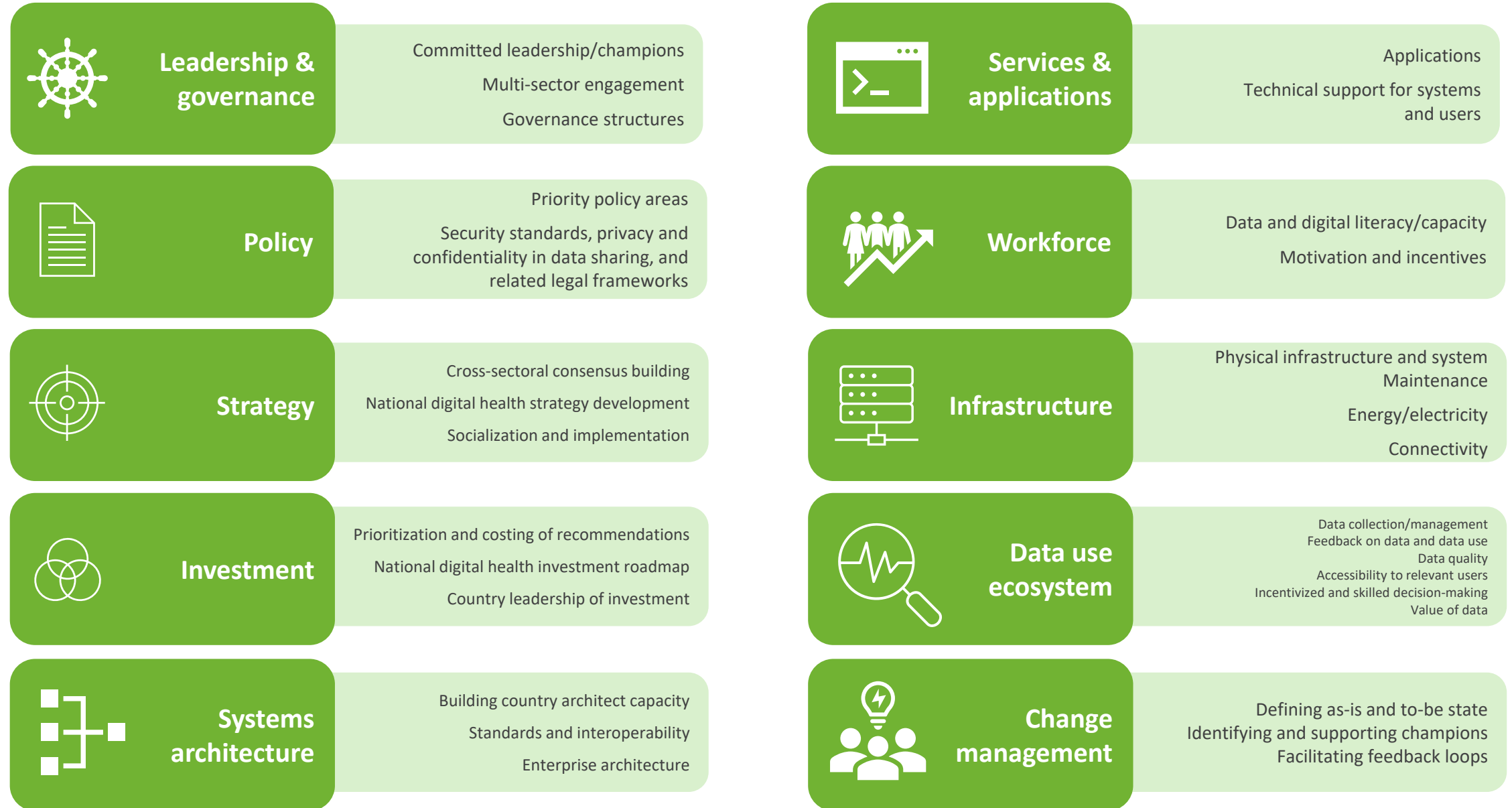
33 key informant interviews.

4 in-country conversations, 21 countries engaged across Africa, South America and Asia

1 synthesis workshop.

1 digital transformation model, 10 critical elements, 2 new elements

DUAL implementation framework



The DUAL model



The DUAL model identifies ten core elements of a comprehensive approach to transforming a country's health data systems and digital tools to advance data use.

It builds on previous models including the WHO-ITU eHealth Strategy building blocks.

Lessons learned



Leadership and governance

- Adopt approaches that fit project goals.
- Remain flexible to shifts in government.



Policy

- Build on existing health policies and standards.
- Put in place governance structures.



Strategy

- Develop clear, long-term, and flexible plans and solutions.



Investment

- Ensure the alignment of investments.
- Develop funding oversight mechanisms.



Systems architecture

- Develop an implementation process and framework that uses “practical implementation” approaches.



Services and applications

- Engage stakeholders within the health sector and beyond.



Workforce

- Increase data use at “lower levels,” including access to data and the skills to interpret data for daily use.



Infrastructure

- Rather than building for a “digital ideal,” consider ways to work with what is currently in place.



Data use ecosystem

- Strengthen data use culture at all levels.
- Take a holistic approach.



Change management

- Consider political readiness and buy-in among senior leadership to drive change and increase uptake.



The DUAL model at work: Malawi



Adapting digital systems to meet COVID-19 challenges

Malawi's strong data use ecosystem and existing interoperability between systems allowed the country to pivot quickly to respond to the COVID-19 crisis.



Leadership and
governance

The DUAL model at work: Malawi

Using an embedded approach to project governance to engage stakeholders

24 staff positions were seconded to the MOH to launch the country's first Digital Health Division.

This approach helped build champions within the MOH.

DUAL



Policy

The DUAL model at work: Tanzania

Governing digital transformation

A National Digital Health Steering Committee (NDHSC), chaired by the permanent secretary of the MOH in Tanzania, serves as the country's primary governance body overseeing implementation of Tanzania's National Digital Health Strategy.



Systems
architecture

The DUAL model at work: Tanzania

Developing a blueprint for the health system

The implementation team partnered with the government of Tanzania to develop a health enterprise architecture, which serves as a conceptual blueprint for the structure and operation of the country's national digital health system.

DUAL



Services and
applications



The DUAL model at work: Tanzania

Centralizing digital oversight

The government will soon implement the Center of Digital Health (CDH), which will support and oversee all digital health initiatives in the country

DUAL

Call to action: Implementers

Apply the DUAL model to projects to optimize the impact of digital and data interventions by:

- Ensuring digital health activities are government-driven by aligning to country strategies, policies, and health visions.
- Developing interoperable digital health systems.
- Building multiuse digital health systems and tools that can be applied across different scenarios, uses, and landscapes (as appropriate), rather than rebuilding applications for every new environment..
- Building the capacity of health actors at all tiers of the health system to model and cultivate a culture of data use.
- Working within existing governance bodies, technical working groups, and committees to ensure buy-in for and support the design of digital and data initiatives.

DUAL

DATA USE ACCELERATION
AND LEARNING

